

A guide to

HATE CRIME

Do not suffer in silence

Information

Help & Support



CONTENTS

About the Project.....	3
What is a Hate Crime.....	4
Hate Crime vs Hate Incident.....	6
What is the Impact of Hate Crimes.....	8
Who can be a Victim of Hate Crime.....	10
Who can be the Perpetrator of Hate Crime.....	10
Who can Report a Hate Crime.....	11
Ways to Report a Hate Crime.....	11
Deciding to Report a Hate Crime.....	12
Managing Expectations.....	14
Where to Get Help and Advice.....	15



ABOUT THE PROJECT

Chinese Community Wellbeing Society is part of 24 East and SE Asian groups joining together to raise awareness about hate crime and reporting amongst East and SE Asian communities. The project is led by the Chinese Welfare Trust, Newham Chinese Association and Protection Approaches and is funded by the National Lottery Community Fund. As part of this national campaign the Chinese Community Wellbeing Society (CCWS) has been selected to be the South-West representative for promoting hate crime awareness.

Information in this booklet is provided by Protection Approaches.



WHAT IS A

A HATE CRIME IS...

...ANY CRIME THAT THE VICTIM OR ANYONE ELSE THINKS WAS MOTIVATED BY HOSTILITY OR PREJUDICE BASED ON A PERSON'S:

RACE

A person's skin colour or the country they come from



RELIGION

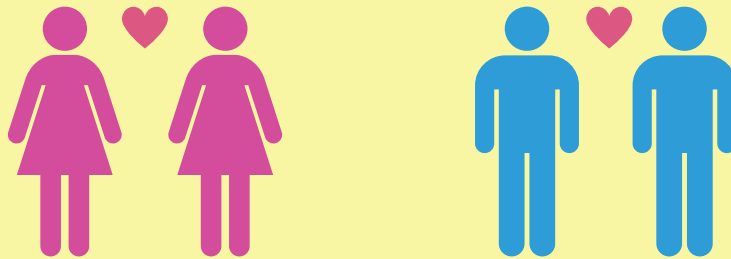
The religion or belief of a person



HATE CRIME ?

SEXUAL ORIENTATION

Whom a person loves - bisexual, gay, heterosexual and lesbian people



DISABILITY

A physical or mental condition that has negative effects on a person's ability to undertake daily activities



TRANSGENDER IDENTITY

When personal identity and gender do not correspond with a person's birth sex, for example someone who was born a man but identifies as a woman

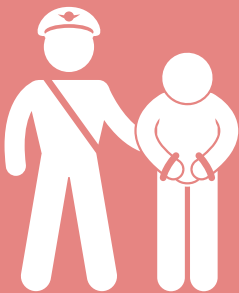


HATE CRIME

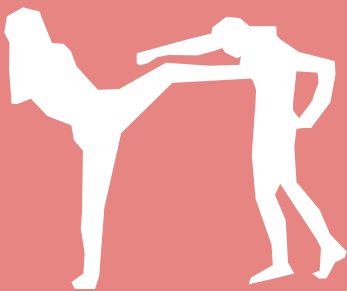
VS



Hate crimes are any criminal offence that has been carried out because of hostility or prejudice based on race, religion, sexual orientation, disability or transgender identity.



Hate crimes occur when the law has been broken.



Examples of hate crime can be physical assault, theft, harassment, criminal damage, vandalism and fraud.



It is important to report hate crimes.

HATE INCIDENT

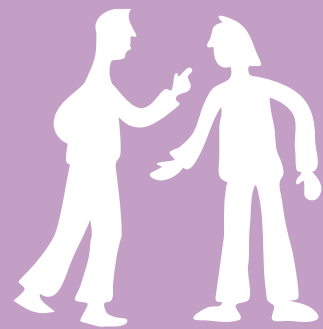
Hate incidents are an event, occurrence, or action which the victim, or anyone else thinks was motivated by prejudice or hostility based on race, religion, sexual orientation, disability or transgender identity.



Hate incidents do not involve the law being broken.



Examples of hate incidents can be verbal abuse and online abuse like name calling and offensive jokes.



It is important to report hate incidents.



WHAT IS THE IMPACT OF HATE CRIMES?

HATE CRIMES CAN CAUSE FEAR, ANXIETY, ANGER AND HUMILIATION.

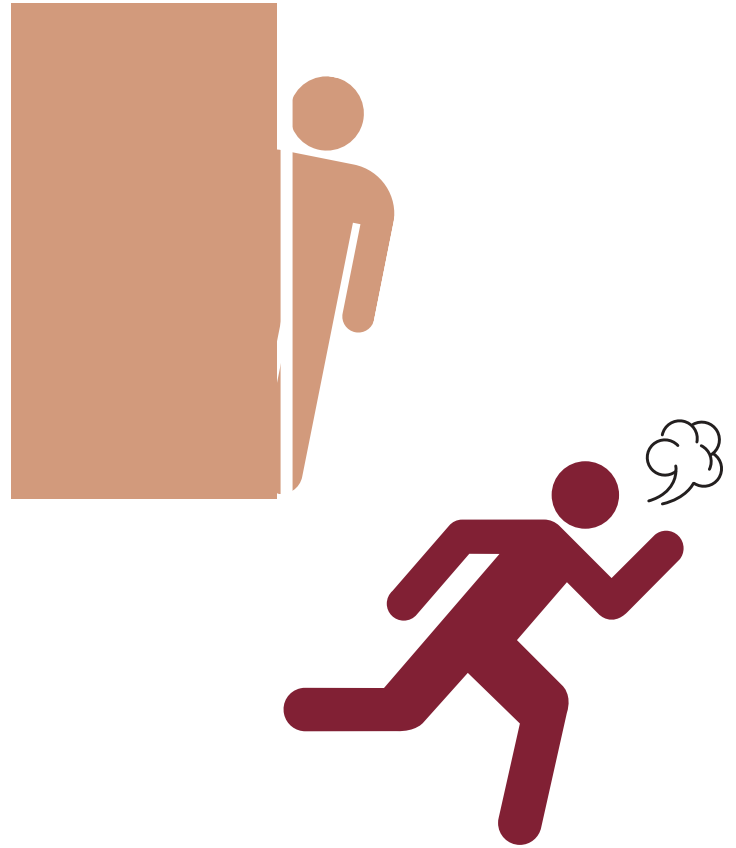


TO VICTIMS, HATE CRIMES FEEL VERY PERSONAL BECAUSE THEY ARE TARGETED BECAUSE OF WHO THEY ARE OR WHO THEY ARE ASSUMED TO BE.

VICTIMS FEEL ESPECIALLY VULNERABLE AS THEY FEEL THAT THEY CANNOT CHANGE THE REASON WHY THEY WERE TARGETED E.G. RACE, RELIGION ETC.



HATE CRIME CAN ALSO CAUSE PEOPLE TO CHANGE THEIR BEHAVIOUR TO AVOID HATE CRIMES AND INCIDENTS, SUCH AS NOT GOING OUT AS MUCH OR AVOIDING CERTAIN AREAS.



REPEAT VICTIMISATION CAN WORSEN THE EMOTIONAL TOLL OF HATE CRIME.

IF YOU FEEL YOU NEED ANY HELP OR SUPPORT, THE CHINESE WELFARE TRUST OFFERS COUNSELLING OVER THE PHONE.



**TO FIND OUT MORE, CALL:
07788 614000**

WHO CAN BE THE VICTIM OF HATE CRIME?



ANYONE CAN BE THE VICTIM OF A HATE CRIME OR HATE INCIDENT



FOR EXAMPLE, YOU COULD BE TARGETED BECAUSE SOMEONE THINKS YOU'RE FROM A PARTICULAR RELIGION EVEN THOUGH YOU'RE NOT

WHO CAN BE THE PERPETRATOR OF HATE CRIME?

ANYONE - THE PERSON WHO COMMITS THE CRIME OR INCIDENT COULD BE A STRANGER OR SOMEONE YOU KNOW

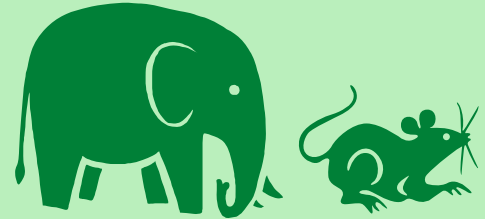


WHO CAN REPORT A HATE CRIME?

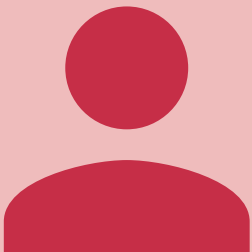
ANYONE - A VICTIM OR A WITNESS CAN REPORT A HATE CRIME



ALL HATE CRIMES, WHETHER THEY BE BIG OR SMALL, ARE IMPORTANT TO REPORT



WAYS TO REPORT A HATE CRIME?



IN PERSON

AT A POLICE STATION
AT A THIRD PARTY ORGANISATION SITE
SUCH AS THE CHINESE LANTERN (CLP)
HELPLINE



OVER THE PHONE

POLICE - 999 (EMERGENCY)
POLICE - 101 (NON EMERGENCY)
CLP HELPLINE - 0808 802 0012
STOP HATE UK - 0800 138 1625



ONLINE

TRUE VISION: WWW.REPORT-IT.ORG.UK

DECIDING TO REPORT A HATE CRIME

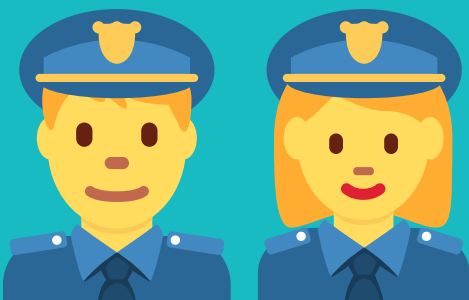


Q: I don't want to report hate crime, reporting takes too long.

A: Most online hate crime forms can be completed in just a few minutes.

If you have given your details to the police or our CLP Helpline, they will follow up with a phone call or visit.

If you have reported anonymously to the police or CLP Helpline, they will not contact you.



Q: I don't want to speak to the police, I don't trust the police.

A: The police want to help you if you are a victim or witness of hate crime.

Most police officers will treat you kindly and with respect.

If for any reason you do not want to engage with the police, you can report hate crime anonymously online or through our CLP Helpline.



Q: There is no point in reporting hate crime, the police won't do anything or take it seriously

A: The police see hate crime as an important priority,

however, often there is not enough evidence for police to investigate or to find a perpetrator.

Reporting helps police understand the extent of hate crime in your local area so they can better respond to it and prevent it from happening to other people



Q: I don't feel confident reporting due to the language barrier

A: Third party organisations can support those who can't speak or write in English.

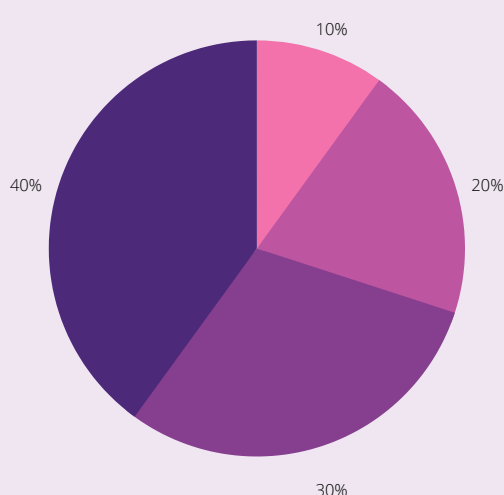
Chinese Community Wellbeing Society can translate and help you fill in the online reporting form.

The police also offer interpretation if you wish to report hate crime over the phone.

MANAGING EXPECTATIONS

It has been shown that just under 10% of reported hate crimes result in a prosecution...

...However, it is still important to report as it will ensure that there is still a record of what has happened.



Only if hate crimes are reported can the police know where to allocate more resources...

...This in turn can help prevent future hate crimes from occurring .

WHERE TO GET HELP AND ADVICE

CHINESE LANTERN HELPLINE

0808 8020012



If you are a victim of hate crime but are not sure what to do, please call our helpline. Besides a listening ear, we offer the following:

- Answers to your questions
- Providing you with relevant information
- Help with reporting
- Support
- Sign-posting
- Referral

We can also be contacted:

Facebook: www.facebook.com/ChineseCWS

Email: admin@chinesecws.org.uk

Wechat: ChineseCWS89

Whatsapp: 44 07511052273

OTHER SUPPORT ORGANISATIONS:



Victim Support
08 08 16 89 111



True Vision
www.report-it.org.uk



Stop Hate UK
0800 138 1625



Citizens Advice
03444 111 444

**HATE CRIME IS
NOT NORMAL,
IT IS NOT
ACCEPTABLE
AND REPORTING
CAN HELP STOP IT.**

